



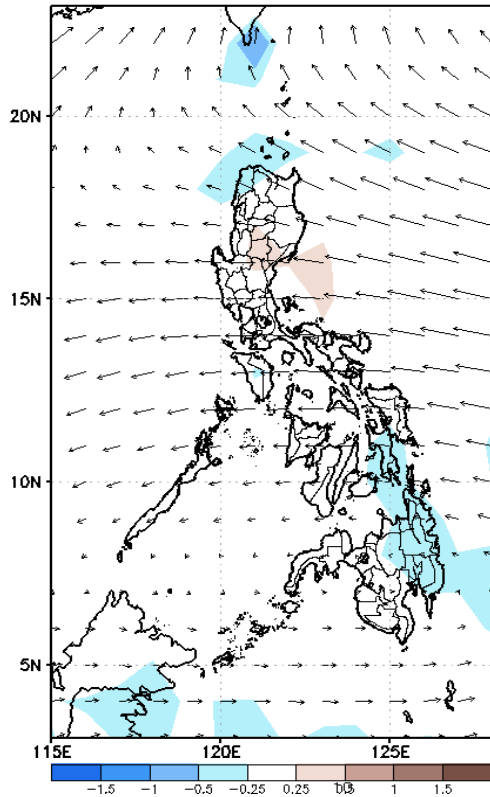
Week 1 & Week 2 Forecast for the Philippines using GEFS Model



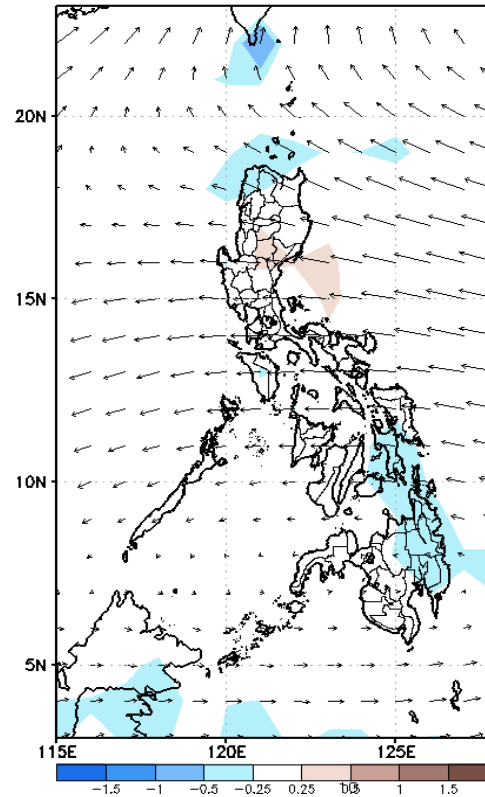
GEFS Week-1 Forecasts: Divergence & Wind Anomaly

Week 1: Apr 22-28, 2022

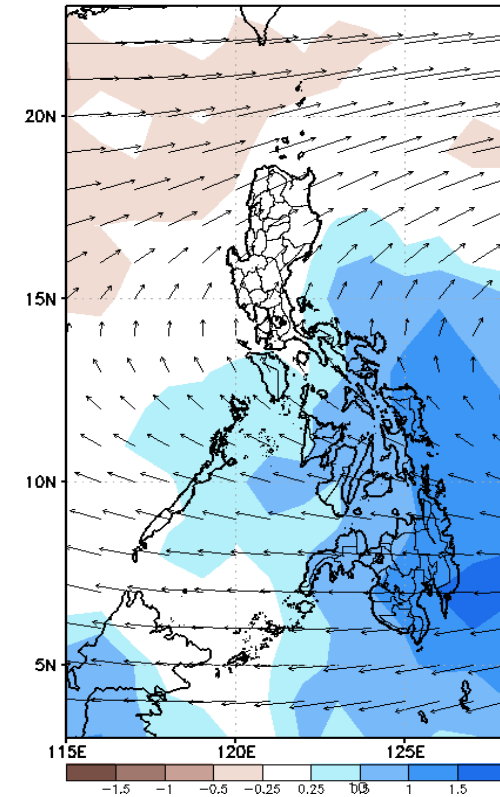
GEFS Week-1 850-hPa Divergence and Wind Anomaly
Valid: 20220422 - 20220428



GEFS Week-1 700-hPa Divergence and Wind Anomaly
Valid: 20220422 - 20220428



GEFS Week-1 200-hPa Divergence and Wind Anomaly
Valid: 20220422 - 20220428



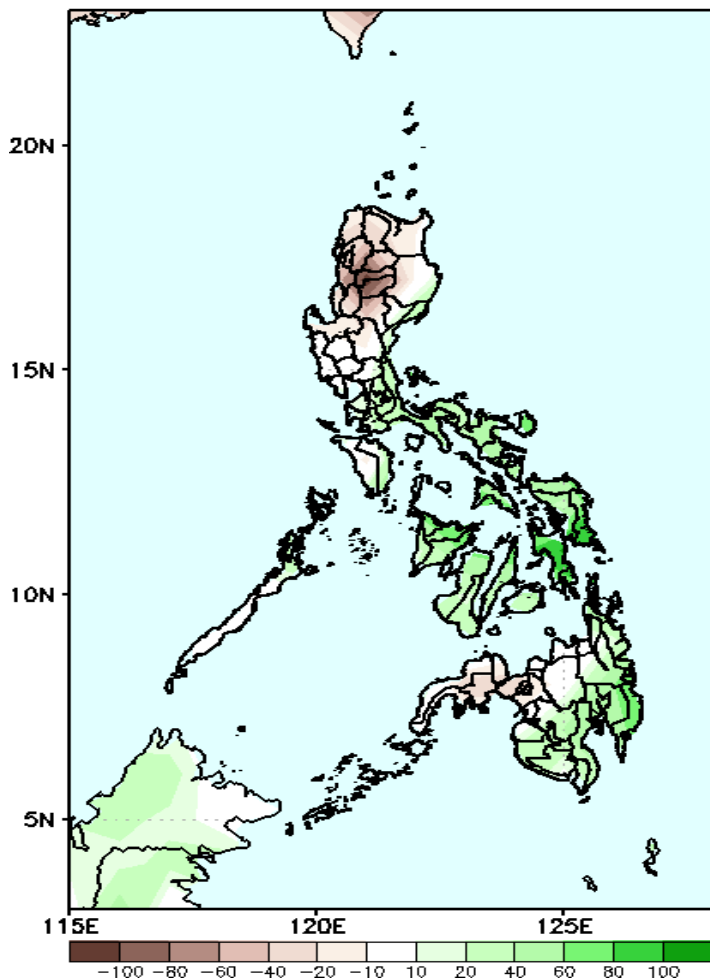
Upper and low level Divergence suggest a likelihood of moderate to heavy precipitation in Bicol region, Palawan and most parts of Visayas and Mindanao. Easterlies affecting most parts of the country attributing to warmer temperatures during the forecast period.



Precipitation Anomaly and Exceedance Probability > 25/50 mm

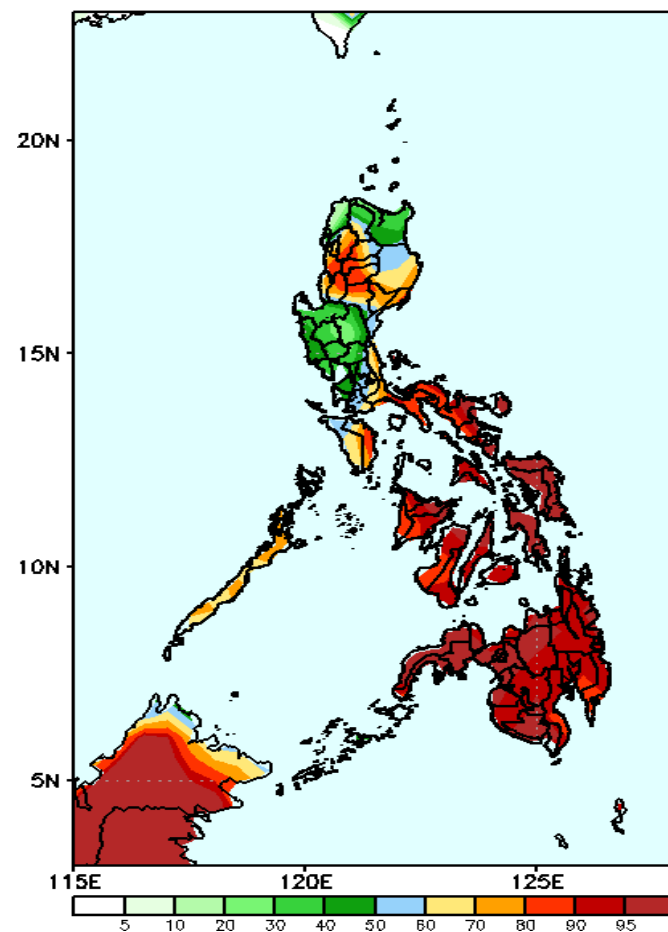
Week 1: Apr 22-28, 2022

GEFS Week-1 Precip Anomaly
Valid: 20220422 - 20220428



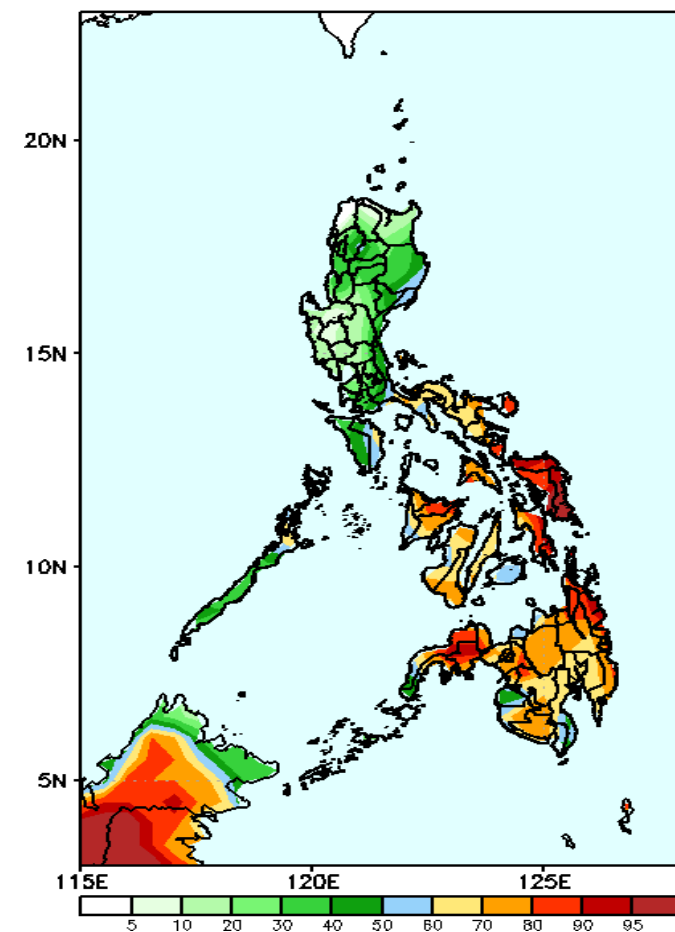
Rainfall deficit of 40-80mm is in Cordillera Region while 40-100mm increase of rainfall in most parts of Visayas and southern Mindanao during the forecast period.

GEFS Week-1 Exceedance Prob. > 25mm
Valid: 20220422 - 20220428



High probability of rainfall to exceed 25mm in most parts of the country except Ilocos Norte, Apayao, Cagayan, Central Luzon, Pangasinan and Cavite during the forecast period.

GEFS Week-1 Exceedance Prob. > 50mm
Valid: 20220422 - 20220428

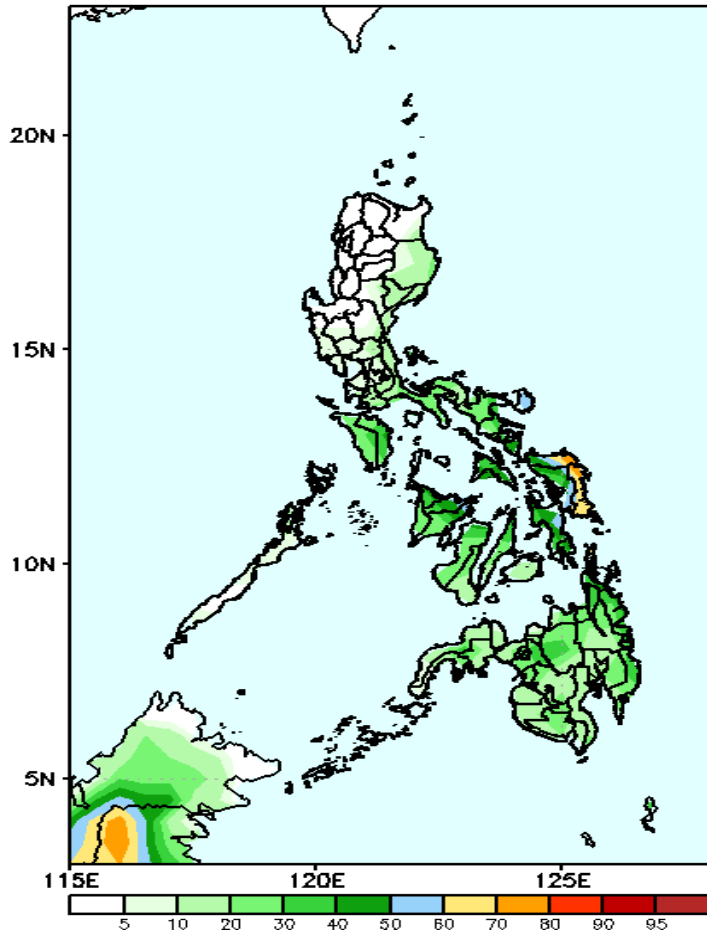


High probability of rainfall to exceed 50mm in Quezon, most parts of Bicol region, Visayas and Mindanao while less likely for the rest of Luzon during the forecast period.

Exceedance Probability > 100/150/200 mm

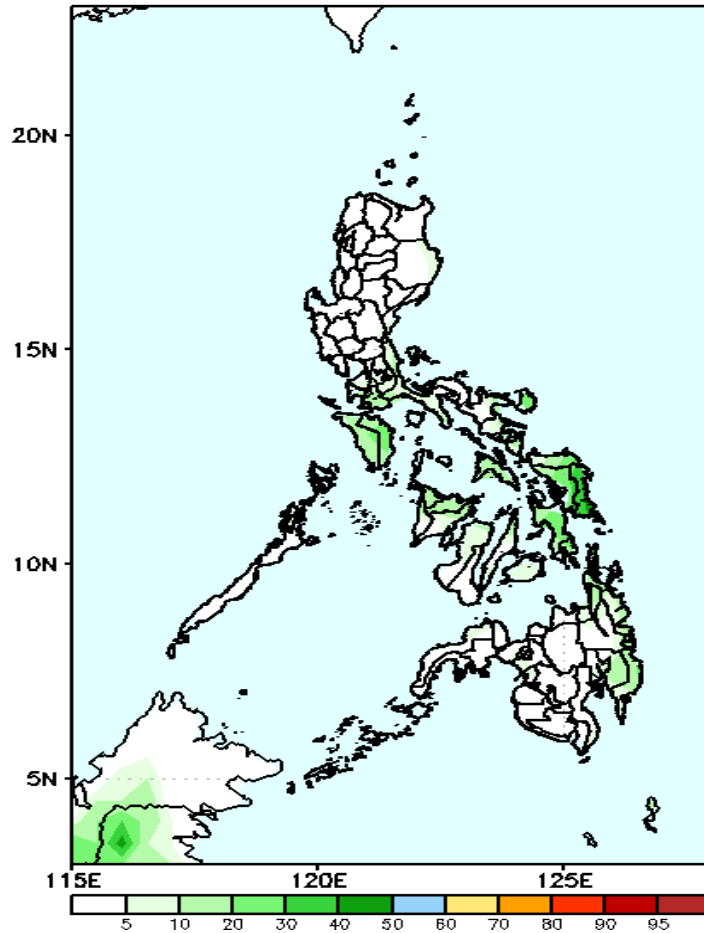
Week 1: Apr 22-28, 2022

GEFS Week-1 Exceedance Prob. > 100mm
Valid: 20220422 - 20220428



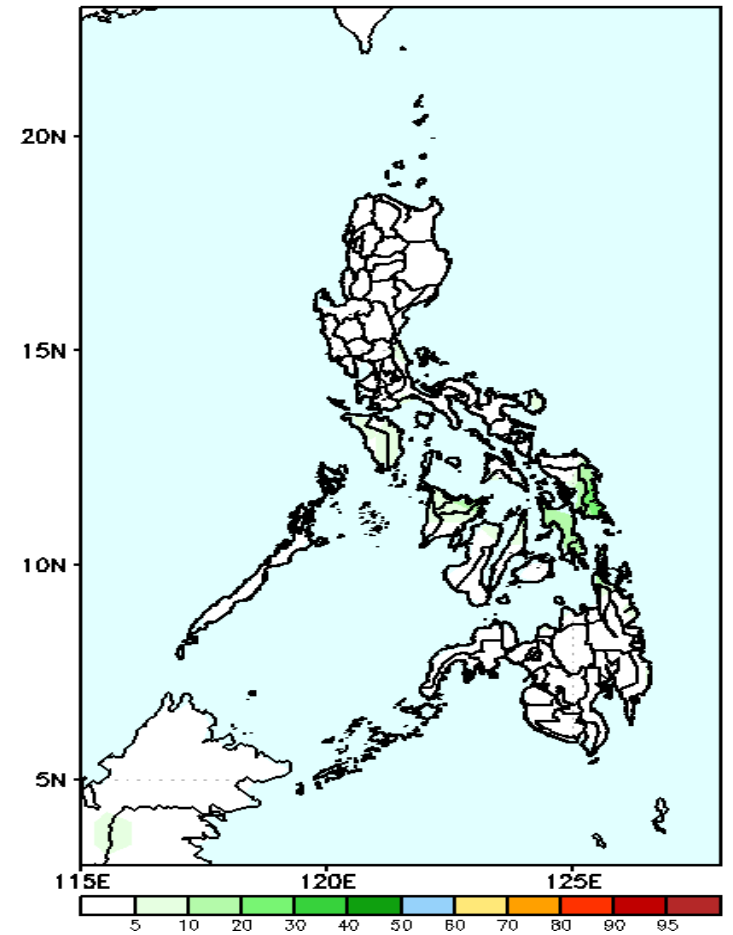
Low probability of rainfall to exceed 100mm in most parts of the country except in Eastern Samar during the forecast period.

GEFS Week-1 Exceedance Prob. > 150mm
Valid: 20220422 - 20220428



Low probability of rainfall to exceed 150mm in most parts of the country during the forecast period.

GEFS Week-1 Exceedance Prob. > 200mm
Valid: 20220422 - 20220428



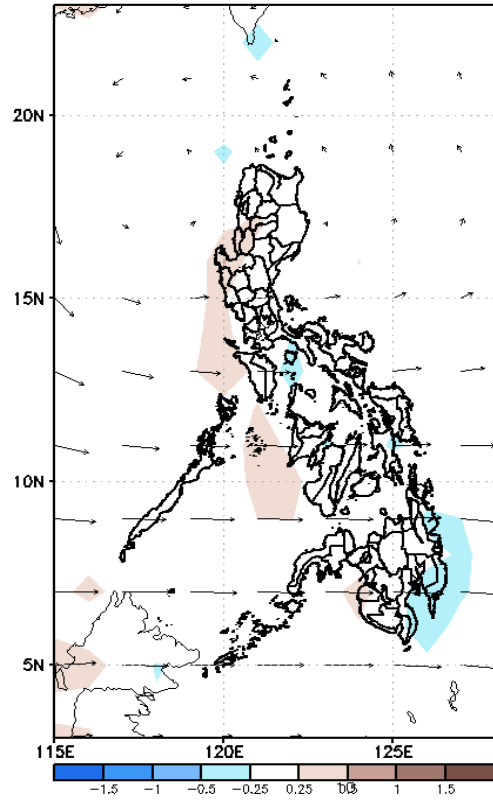
Low probability of rainfall to exceed 200mm in most parts of the country during the forecast period.



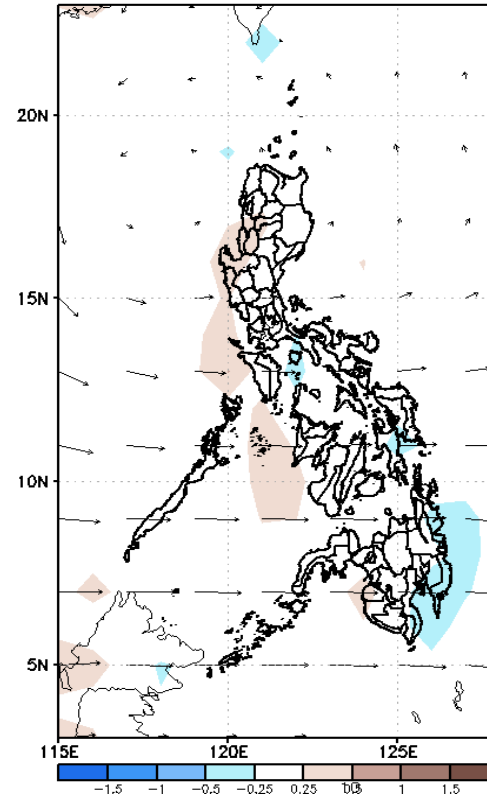
GEFS Week-2 Forecasts: Divergence & Wind Anomaly

Week 2: Apr 29- May 05, 2022

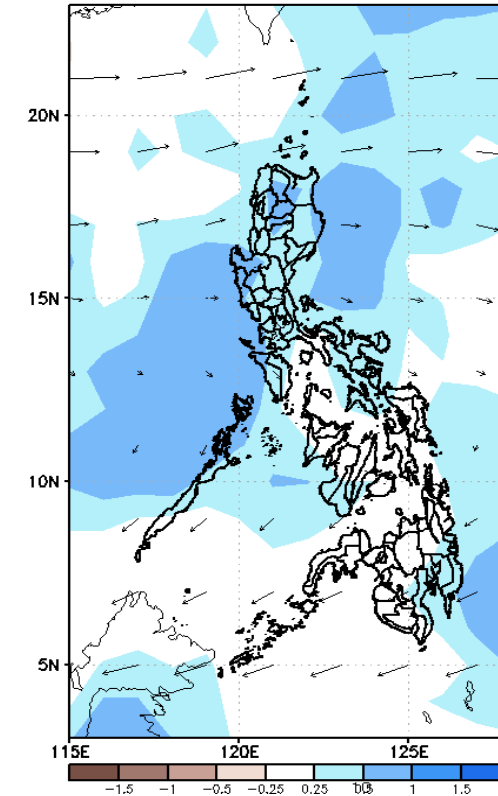
GEFS Week-2 850-hPa Divergence and Wind Anomaly
Valid: 20220429 - 20220505



GEFS Week-2 700-hPa Divergence and Wind Anomaly
Valid: 20220429 - 20220505



GEFS week-2 200-hPa Divergence and Wind Anomaly
Valid: 20220429 - 20220505

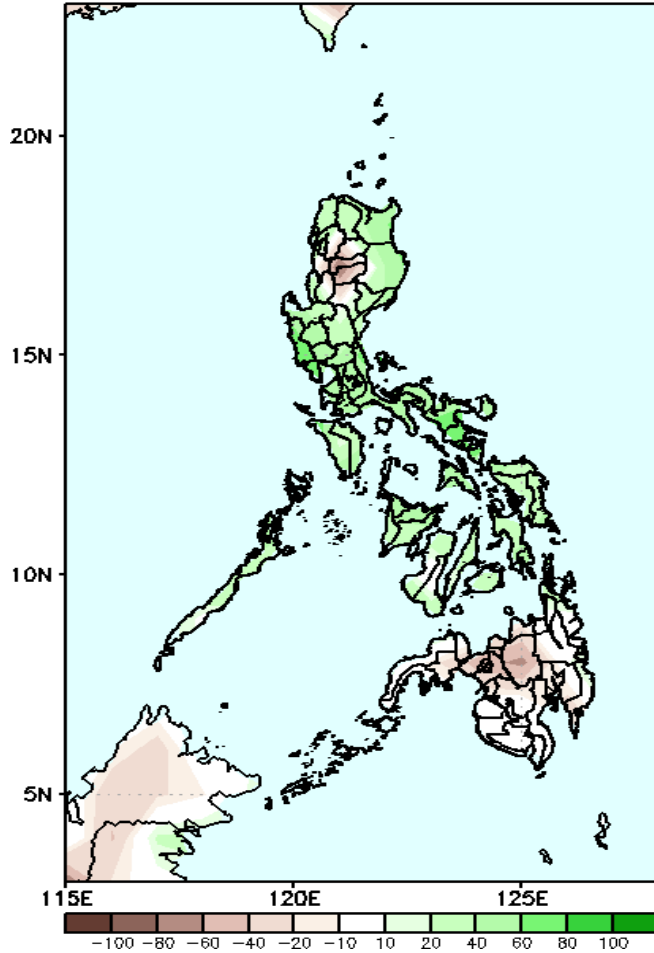


Upper and low level Divergence suggest a likelihood of light to moderate precipitation in most parts of the country. Easterlies affecting most parts of the country attributing to warmer temperatures during the forecast period.

Precipitation Anomaly and Exceedance Probability > 25/50 mm

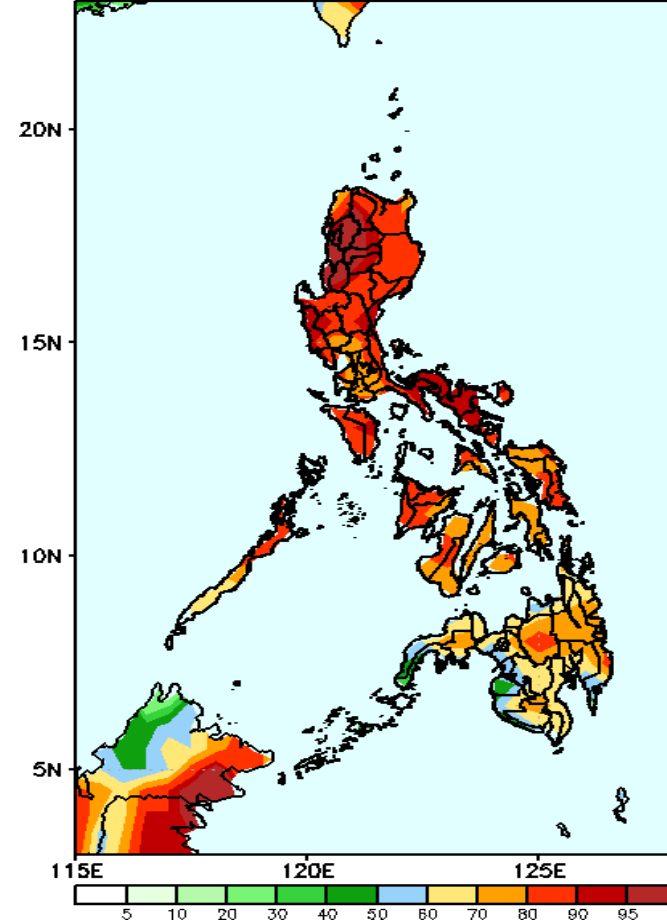
Week 2: Apr 29- May 05, 2022

GEFS Week-2 Precip Anomaly
Valid: 20220429 - 20220505



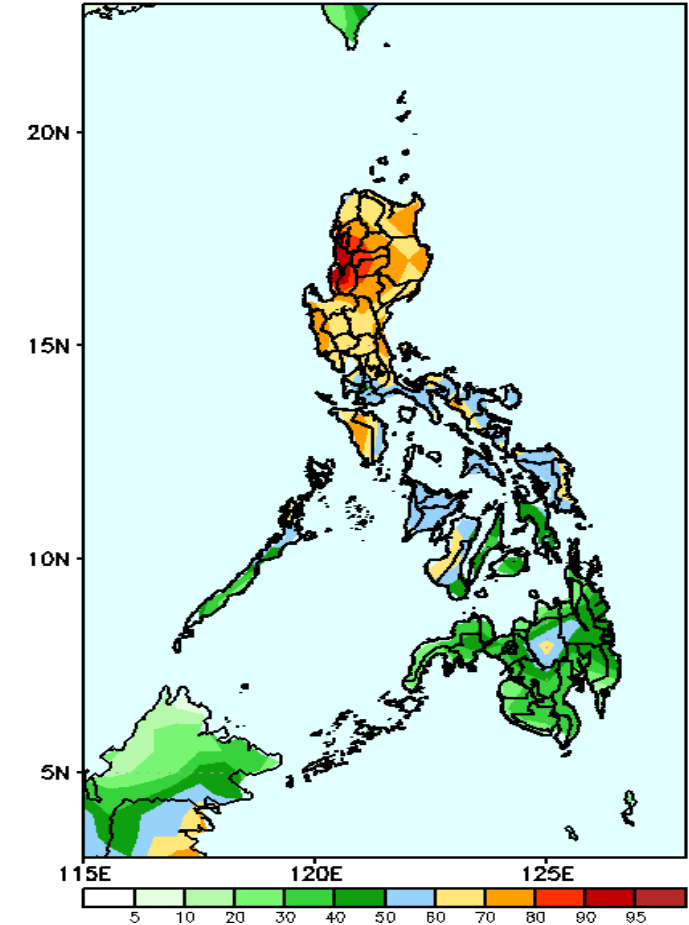
Increase of rainfall of 40-90mm in most parts of Luzon and Visayas while rainfall deficit of 20-40mm in Kalinga, Mt. Province, Ifugao and Bukidnon during the forecast period.

GEFS Week-2 Exceedance Prob. > 25mm
Valid: 20220429 - 20220505



High probability of rainfall to exceed 25mm in most parts of the country during the forecast period.

GEFS Week-2 Exceedance Prob. > 50mm
Valid: 20220429 - 20220505

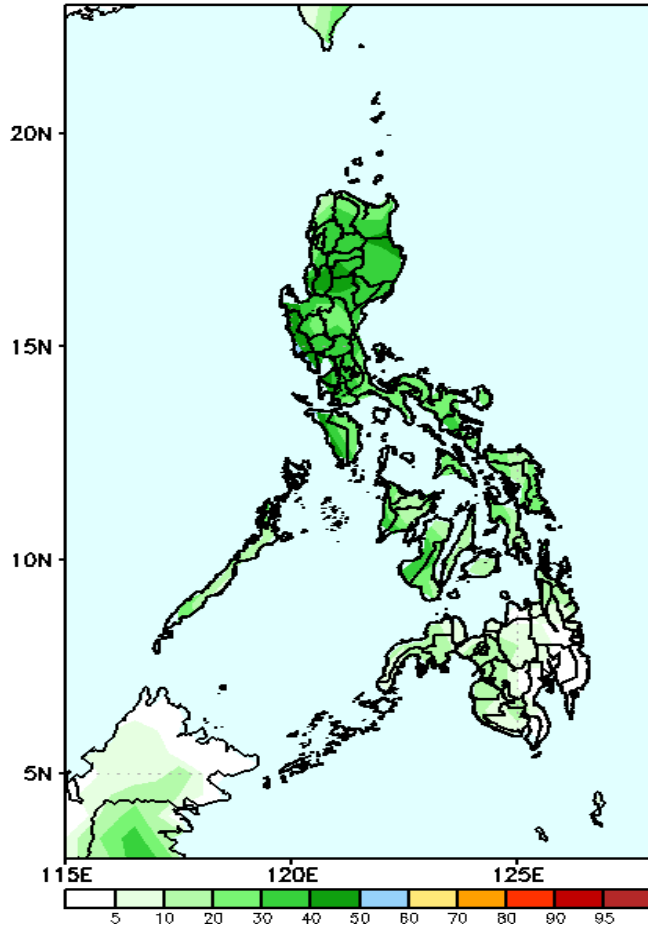


High probability of rainfall to exceed 50mm in most parts of Luzon and some parts of Visayas while less likely for the rest of the country during the forecast period

Exceedance Probability > 100/150/200 mm

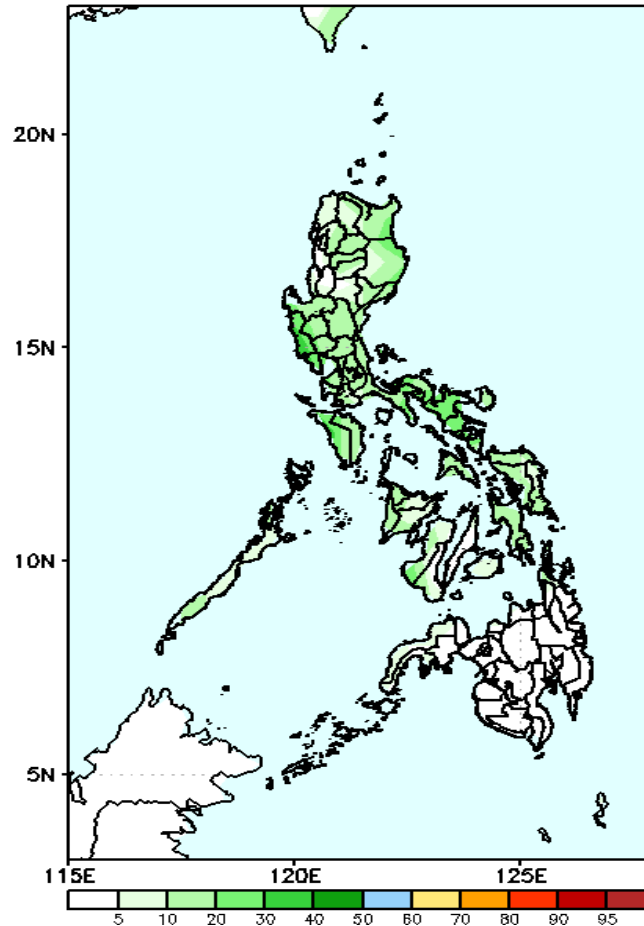
Week 2: Apr 29- May 05, 2022

GEFS Week-2 Exceedance Prob. > 100mm
Valid: 20220429 - 20220505



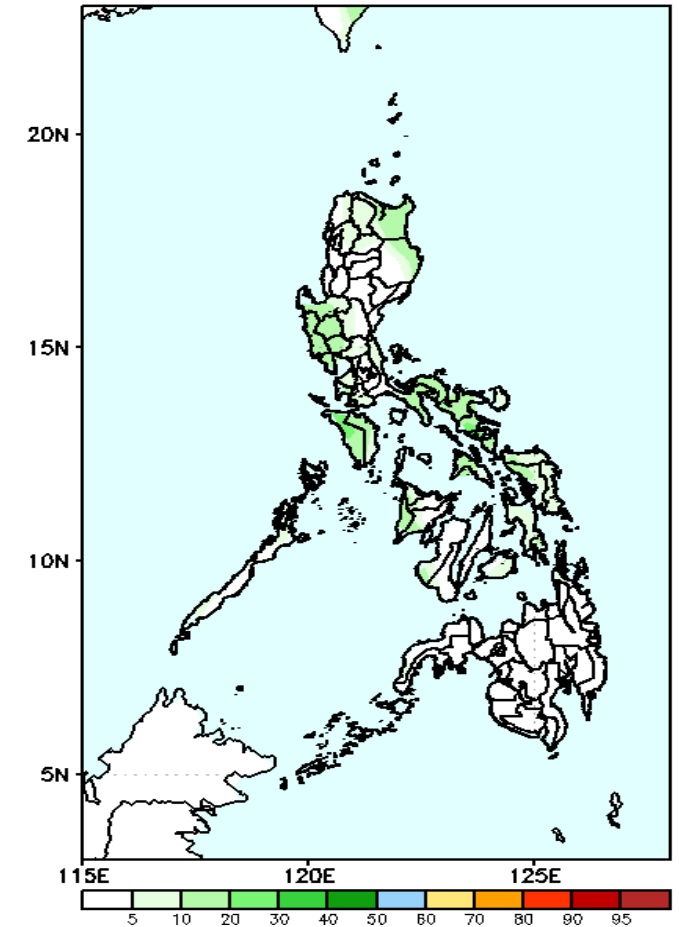
Low probability of rainfall to exceed 100mm in most parts of the country during the forecast period

GEFS Week-2 Exceedance Prob. > 150mm
Valid: 20220429 - 20220505



Low probability of rainfall to exceed 150mm in most parts of the country during the forecast period.

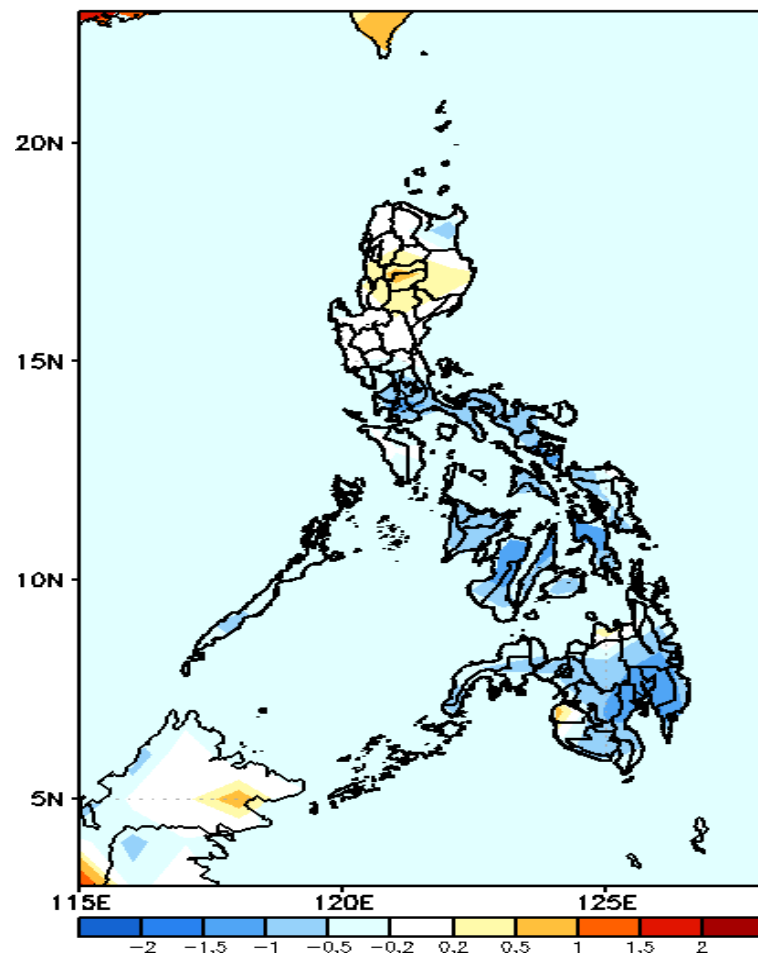
GEFS Week-2 Exceedance Prob. > 200mm
Valid: 20220429 - 20220505



Low probability of rainfall to exceed 200mm in most parts of the country during the forecast period.

GEFS Week-1 & 2 Forecasts: T2m Anomaly

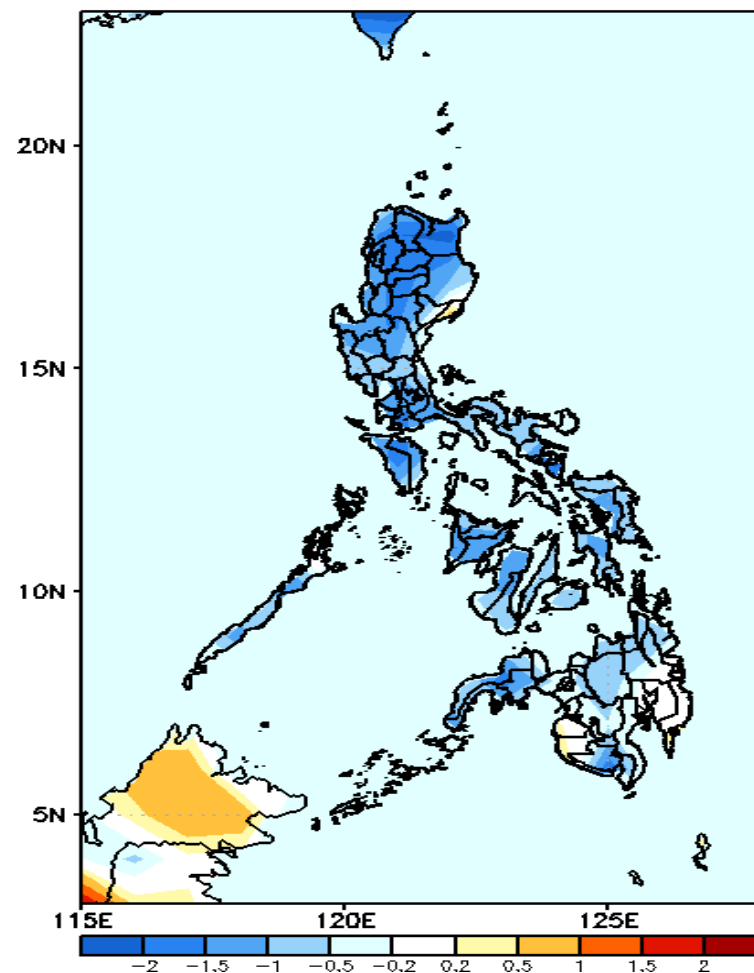
GEFS Week-1 T2m Anomaly
Valid: 20220422 - 20220428



2m Temperature Week 1: Apr 22-28, 2022

Slightly cooler to cooler than average surface air temperature will likely experience in most parts of Southern Luzon, Bicol Region, in Visayas and Mindanao while Average to slightly warmer for the rest of Luzon during the forecast period.

GEFS Week-2 T2m Anomaly
Valid: 20220429 - 20220505



2m Temperature Week 2: Apr 29- May 05, 2022

Cooler than average surface air temperature will likely experience in most parts of the country except in Southern Mindanao where average temperature is expected during the forecast period.